



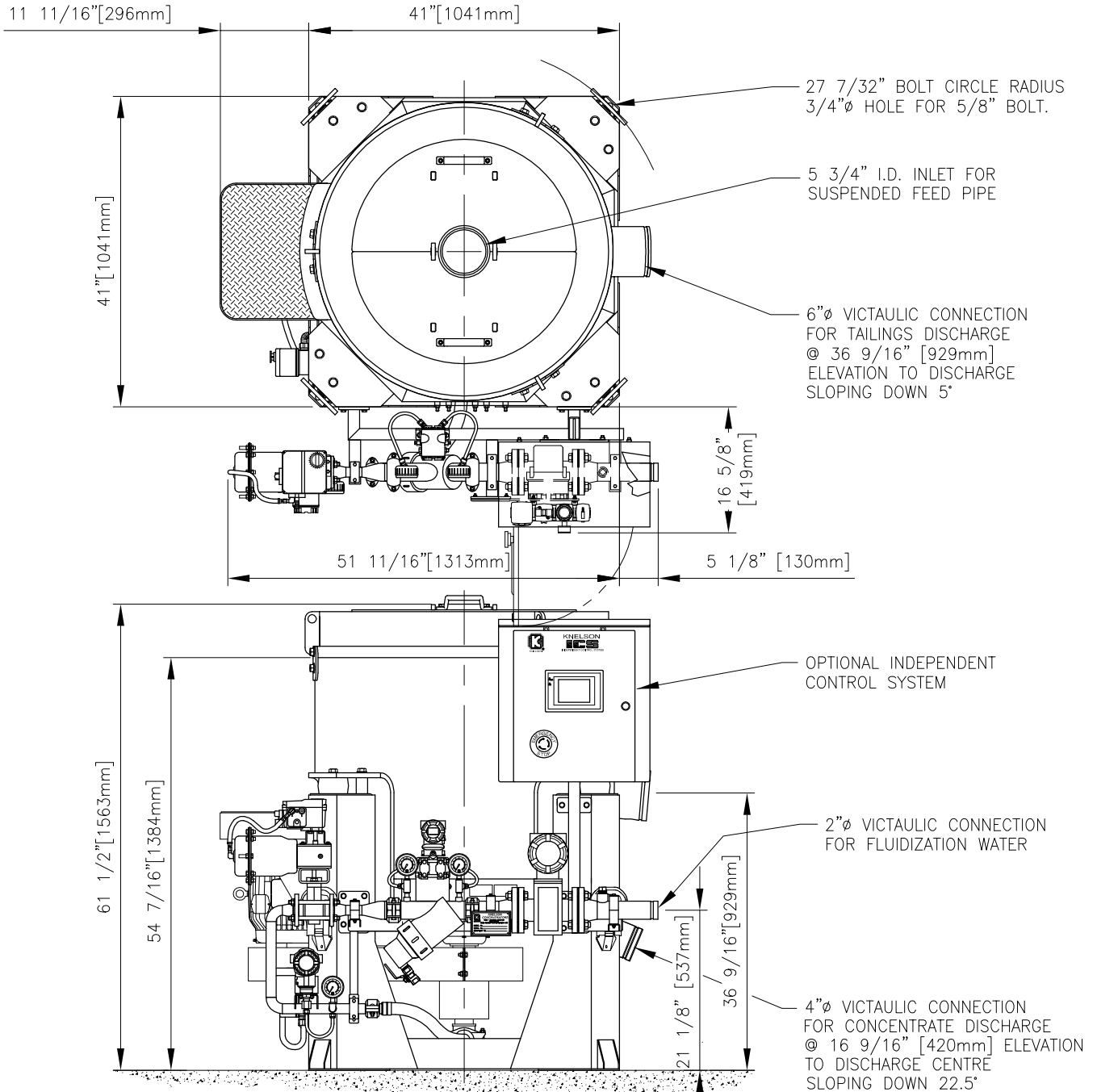
# KNELSON GRAVITY SOLUTIONS

(A division of Knelson, a corporate partnership)  
 19855-98 Avenue, Langley B.C. Canada, V1M 2X5  
 Phone: (604)888-4015, Fax: (604)888-4013  
 www.knelsongravitysolutions.com, e-Mail: knelson@knelson.com

DATE: MAR 06, 2006 DWG. No. A01394E

## KNELSON CONCENTRATOR MODEL KC-XD20 SPECIFICATION SHEET

- FEED CAPACITY (MAY VARY DEPENDING ON MATERIAL) — 17 — 88 tons/hr [15 — 80 tonnes/hr] SOLIDS  
 TYPICAL FLUIDIZATION WATER REQUIREMENT — 35 — 60 USgpm [8 — 14 m<sup>3</sup>/hr]  
 FEED DENSITY — 0 — 75% SOLIDS/WEIGHT  
 MAXIMUM TOTAL VOLUMETRIC THROUGHPUT — 480 USgpm [109 m<sup>3</sup>/hr]  
 FEED SIZE — MAX: 1/4" [6mm]; RECOMMEND: 10 MESH [1.7mm] MINUS  
 TYPICAL CONCENTRATION CYCLE DURATION — HARD ROCK: 1/2 — 4 HOURS [PLACER: 4 — 12 HOURS]  
 TYPICAL FLUSH CYCLE DURATION — 1 — 2 MINUTES  
 CONCENTRATE VOLUME — 300 in<sup>3</sup> [5 L]  
 CONCENTRATE WEIGHT — 15 — 22 lbs [7 — 10 kg]  
 CONCENTRATOR NET WEIGHT — 2200 lbs [1000 kg]  
 H.P. — 7.5 — 10 (ELECTRIC) [5.5 — 7.5 kW]
- APPROXIMATE SHIPPING WEIGHT — 2700 lbs [1230 kg]  
 APPROXIMATE SHIPPING WEIGHT WITH SPARES — 2900 lbs [1310 kg]  
 APPROXIMATE CRATED SHIPPING DIMENSIONS — LENGTH 153cm x WIDTH 158cm x HEIGHT 171cm



**NOTE:**

- SPECIFICATIONS SUBJECT TO CHANGE WITHOUT NOTICE.
- ALL PIPING TO CONCENTRATOR TO BE FLEXIBLE TO ALLOW FOR SLIGHT OSCILLATION OF UNIT DURING OPERATION.
- MACHINE SHOWN WITH OPTIONAL AUTOMATED PIPING, MANUAL PIPING ALSO AVAILABLE