



KNELSON

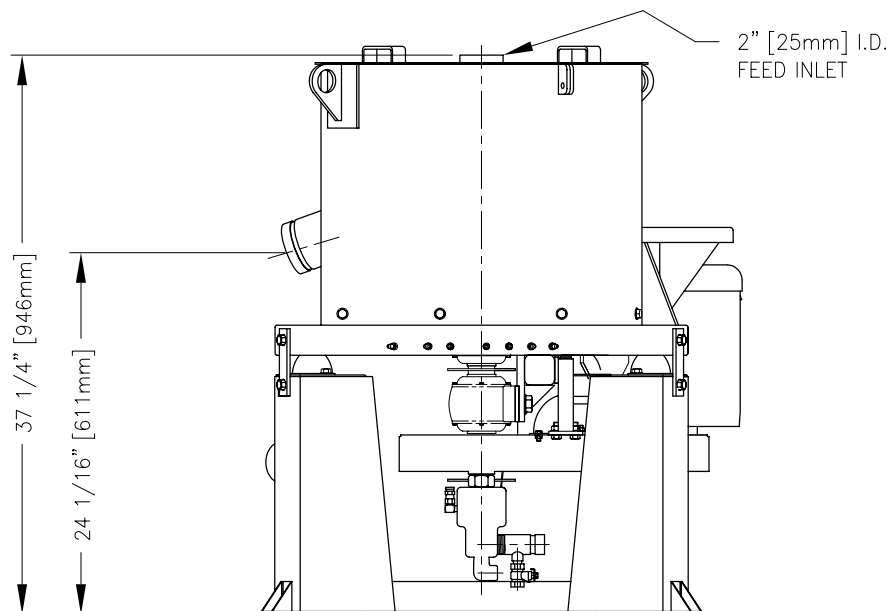
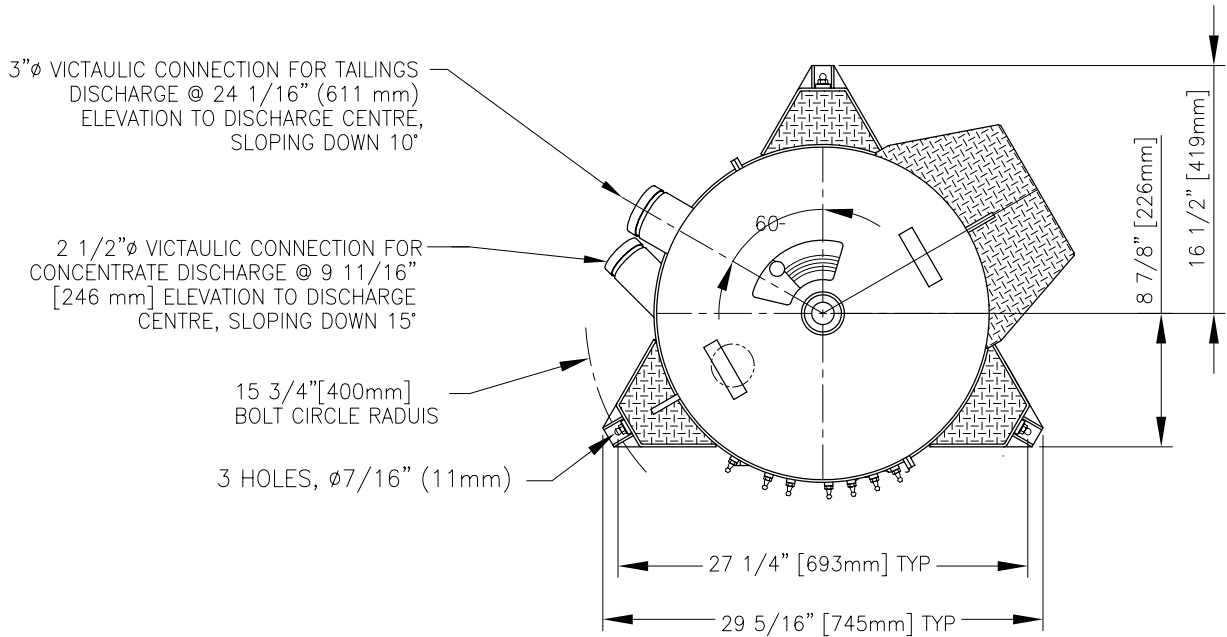
Knelson (a corporate partnership)
 19855 – 98th. Avenue, Langley B.C. Canada, V1M 2X5
 Phone: 604–888–4015, Fax: 604–888–4013
 www.KnelsonGravitySolutions.com, E-Mail: knelson@knelson.com

DATE: JUN. 17, 2005

DWG. No. A02005B1

KNELSON CONCENTRATOR MODEL KC-CVD6 (1 RING) CONTINUOUS SPECIFICATION SHEET

- FEED CAPACITY(MAY VARY DEPENDING ON MATERIAL) – 0.6 – 2.2 tons/hr [0.5 – 2.0 tonne/hr] SOLIDS
 TYPICAL FLUIDIZATION WATER REQUIREMENT – 5 – 12 USgpm [1.1 – 2.7 m³/hr]
 FEED DENSITY – 0 – 50% SOLIDS/WEIGHT
 MAX TOTAL VOLUMETRIC THROUGHPUT – 18 USgpm [4 m³/hr]
 FEED SIZE – MAX: 1/8" [3.2mm]; RECOMMENDED: MINUS 10 MESH [1.7 mm]
 TYPICAL CONTINUOUS CONCENTRATE DISCHARGE – 1% – 50% OF FEED RATE (VARIABLE)
 OPERATING "G" FORCE – VARIABLE (30 – 90g)
 OPERATING SPEED – VARIABLE (581 – 1007 RPM)
 CONCENTRATOR NET WEIGHT – 507 Lbs [230 Kgs.]
 H.P. – 1.5 (ELECTRIC)
 APPROXIMATE SHIPPING WEIGHT – 600 lbs [272 kg]
 APPROXIMATE CRATED SHIPPING DIMENSIONS – LENGTH 92cm x WIDTH 92cm x HEIGHT 97cm



- NOTE:**
- SPECIFICATIONS SUBJECT TO CHANGE WITHOUT NOTICE.
 - ALL PIPING TO CONCENTRATOR TO BE FLEXIBLE TO ALLOW FOR SLIGHT OSCILLATION OF UNIT DURING OPERATION.
 - AUTOMATED PIPING AND CONTROL PANEL ARE REMOTE MOUNTED (NOT SHOWN).